

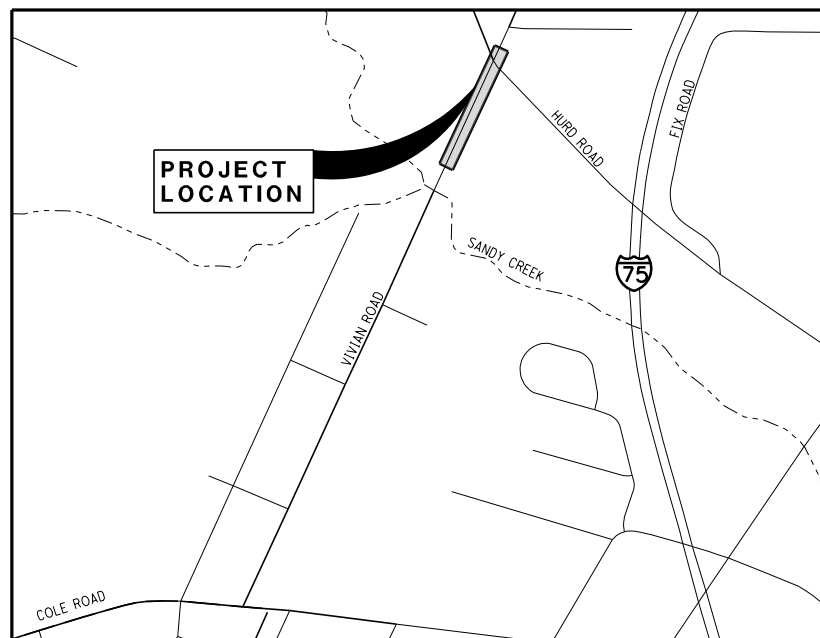
**MONROE COUNTY ROAD COMMISSION
AND
FRENCHTOWN CHARTER TOWNSHIP
PLANS FOR PROPOSED
VIVIAN ROAD DRAINAGE IMPROVEMENTS
IN
FRENCHTOWN CHARTER TOWNSHIP
MONROE COUNTY, MICHIGAN**

EXCEPT WHERE OTHERWISE INDICATED ON THESE PLANS OR IN THE PROPOSAL, ALL MATERIALS AND WORKMANSHIP SHALL BE IN ACCORDANCE WITH THE MICHIGAN DEPARTMENT OF TRANSPORTATION 2012 SPECIFICATIONS FOR CONSTRUCTION.

ALL TRAFFIC CONTROL SHALL BE IN ACCORDANCE WITH THE APPLICABLE SECTIONS OF THE 2011 MICHIGAN MANUAL OF UNIFORM TRAFFIC CONTROL DEVICES (MMUTCD) FOR STREETS AND HIGHWAYS.

YEAR
2018
A.D.T. 6,120
COMM. % 5%

INDEX OF SHEETS	
DESCRIPTION	SHEET NO.
TITLE SHEET	1
PLAN AND PROFILE SHEET	2



LOCATION MAP
1" = 600'

STANDARD PLANS	
CONSTRUCTION OF THE FOLLOWING ITEMS, WHERE CALLED FOR ON THE PLANS, WILL BE CONSTRUCTED ACCORDING TO THE MICHIGAN DEPARTMENT OF TRANSPORTATION STANDARD PLANS AS INDICATED. ALL STANDARD PLANS NECESSARY FOR THIS PROJECT ARE ON FILE AT THE ENGINEER'S OFFICE OR ARE AVAILABLE AT <www.michigan.gov/mdot>.	
ITEM OF WORK	MDOT STANDARD PLAN NO.
DRAINAGE STRUCTURES	R-1-G*
COVER G	R-12-E
DRIVEWAY OPENINGS & APPROACHES	R-29-I
BEDDING AND FILLING AROUND PIPE CULVERTS	R-82-D
UTILITY TRENCHES	R-83-C
SOIL EROSION & SEDIMENTATION	R-96-E

* SPECIAL DETAIL

AS-CONSTRUCTED INFORMATION

MCRC PROJECT #: 459-007-189048
 PROJECT START DATE: _____
 OPEN TO TRAFFIC DATE: _____
 PROJECT COMPLETION DATE: _____
 PRIME CONTRACTOR: _____
 PAVING CONTRACTOR: _____
 FINAL CONST. CONTRACT AMT.: _____

FILLED IN UPON PROJECT COMPLETION



1771 NORTH DIXIE HIGHWAY
MONROE, MICHIGAN 48162
TEL: (734) 289-2200
FAX: (734) 289-2345

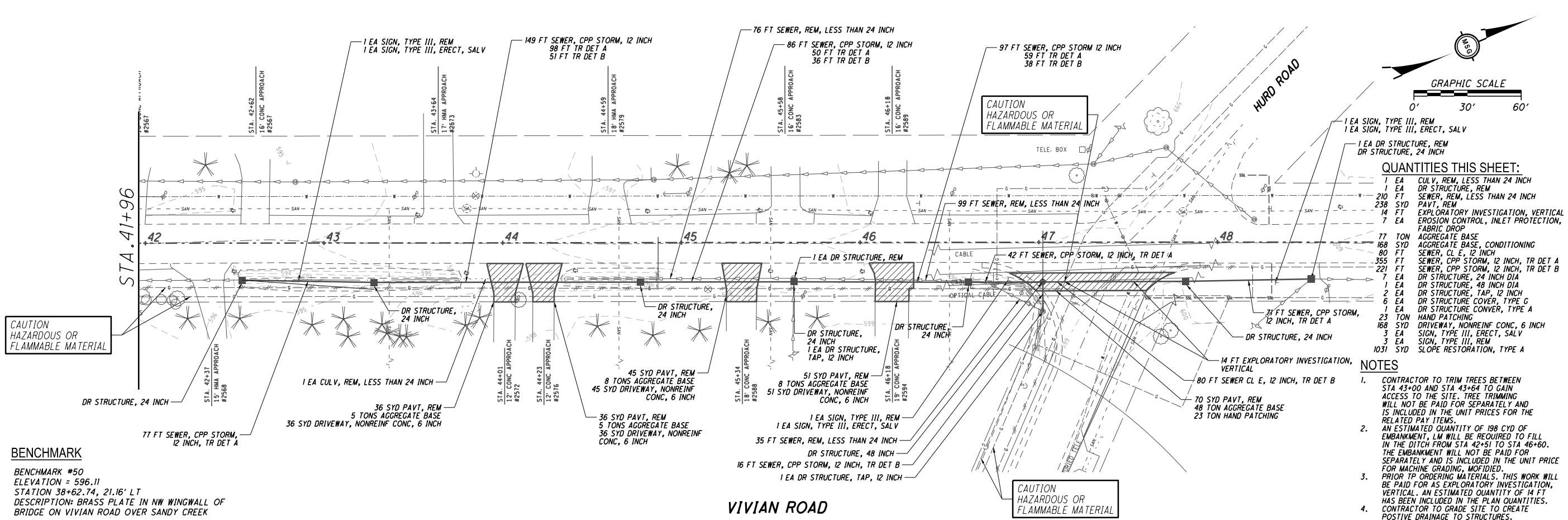


BY: _____
STEVEN L. BOUWS, P.E.
REGISTRATION NO. 37563

DATE _____

SHEET
NO.
1

S:\Projects\Project F - J\TNC\ADMINISTRATION\FIN\IR\2018_Road Projects\FIN\IR\2018_Vivian and Hurd\CAD\PLANS\FIN\IR\PP01.dgn

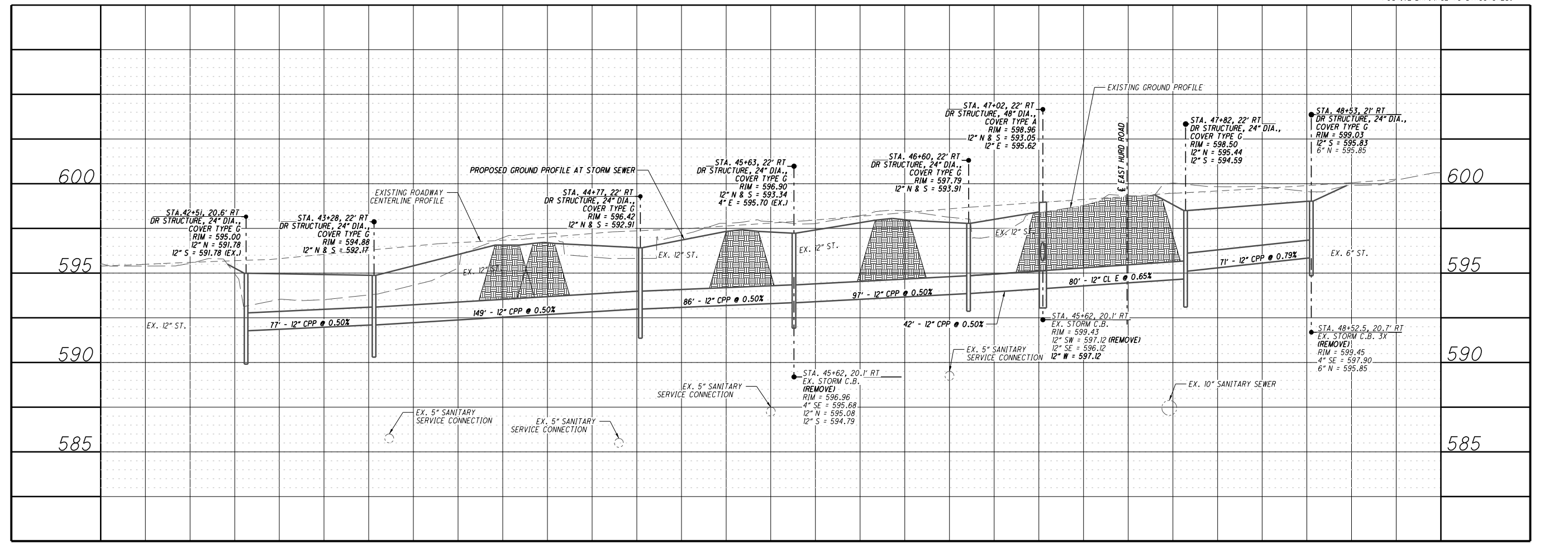


BENCHMARK
 BENCHMARK #50
 ELEVATION = 596.11
 STATION 38+62.74, 21.16' LT
 DESCRIPTION: BRASS PLATE IN NW WINGWALL OF BRIDGE ON VIVIAN ROAD OVER SANDY CREEK

QUANTITIES THIS SHEET:

7 EA	CULV, REM, LESS THAN 24 INCH
210 EA	DR STRUCTURE, REM
238 SYD	SEWER, REM, LESS THAN 24 INCH
14 FT	PAVT, REM
7 EA	EXPLORATORY INVESTIGATION, VERTICAL
	EROSION CONTROL, INLET PROTECTION, FABRIC DROP
77 TON	AGGREGATE BASE
168 SYD	AGGREGATE BASE, CONDITIONING
80 FT	SEWER, CL E, 12 INCH
355 FT	SEWER, CPP STORM, 12 INCH, TR DET A
221 FT	SEWER, CPP STORM, 12 INCH, TR DET B
7 EA	DR STRUCTURE, 24 INCH DIA
1 EA	DR STRUCTURE, 48 INCH DIA
2 EA	DR STRUCTURE, TAP, 12 INCH
6 EA	DR STRUCTURE COVER, TYPE G
1 EA	DR STRUCTURE COVER, TYPE A
23 TON	HAND PATCHING
168 SYD	DRIVEWAY, NONREINF CONC, 6 INCH
3 EA	SIGN, TYPE III, ERECT, SALV
3 EA	SIGN, TYPE III, REM
1031 SYD	SLOPE RESTORATION, TYPE A

- NOTES**
- CONTRACTOR TO TRIM TREES BETWEEN STA 43+00 AND STA 43+64 TO GAIN ACCESS TO THE SITE. TREE TRIMMING WILL NOT BE PAID FOR SEPARATELY AND IS INCLUDED IN THE UNIT PRICES FOR THE RELATED PAY ITEMS.
 - AN ESTIMATED QUANTITY OF 198 CYD OF EMBANKMENT, LM WILL BE REQUIRED TO FILL IN THE DITCH FROM STA 42+51 TO STA 46+60. THE EMBANKMENT WILL NOT BE PAID FOR SEPARATELY AND IS INCLUDED IN THE UNIT PRICE FOR MACHINE GRADING, MODIFIED.
 - PRIOR TO ORDERING MATERIALS, THIS WORK WILL BE PAID FOR AS EXPLORATORY INVESTIGATION, VERTICAL. AN ESTIMATED QUANTITY OF 14 FT HAS BEEN INCLUDED IN THE PLAN QUANTITIES. CONTRACTOR TO GRADE SITE TO CREATE POSITIVE DRAINAGE TO STRUCTURES.



NO.	DATE	BY	DESCRIPTION

1771 NORTH DIXIE HIGHWAY
 MONROE, MI 48102
 PHONE: 734-295-3900
 FAX: 734-295-3945

PROJECT NO.: XXXXXXXX
 PROJECT DATE: FTW/NOV18
 DRAWN BY: KHV
 CHECKED BY: SLB

TECHNICAL SKILL - CREATIVE SPIRIT.

www.MannikSmithGroup.com

PREPARED FOR: FRENCHTOWN CHARTER TOWNSHIP

VIVIAN ROAD DRAINAGE
 FRENCHTOWN CHARTER TOWNSHIP
 MONROE COUNTY, MI

2744 VIVIAN ROAD
 MONROE, MI 48102

PLAN AND PROFILE